



Solvents & Chemicals

Alcohols



www.dps-instruments.com

Alcohols are used to form many important components in many commercial products. The lower alcohols are employed as solvents and antifreezes. Esters of the lower alcohols are employed extensively as solvents for lacquers, paints, varnishes, inks, and adhesives. The plasticizer-range alcohols find their primary use in the form of esters as plasticizers and also as lubricants in high-speed applications such as jet engines. The detergent-range alcohols are used in the form of sulfate esters in detergents and surfactants. Because the analysis of alcohols is so far reaching the DPS Alcohols GC Systems are configured with the latest designed high resolution capillary column and the sensitive FID detector to detect all of these compounds. The Series 600 GC is for analyses in the lab, or use the Portable Companion 1 GC Systems for analyses right where the samples are taken. The fully integrated Alcohols GC Analyzer Systems are small and lightweight and all DPS systems are modular for expandability, upgrades, and easy service.



Series 600 GC

Available Configurations Include:

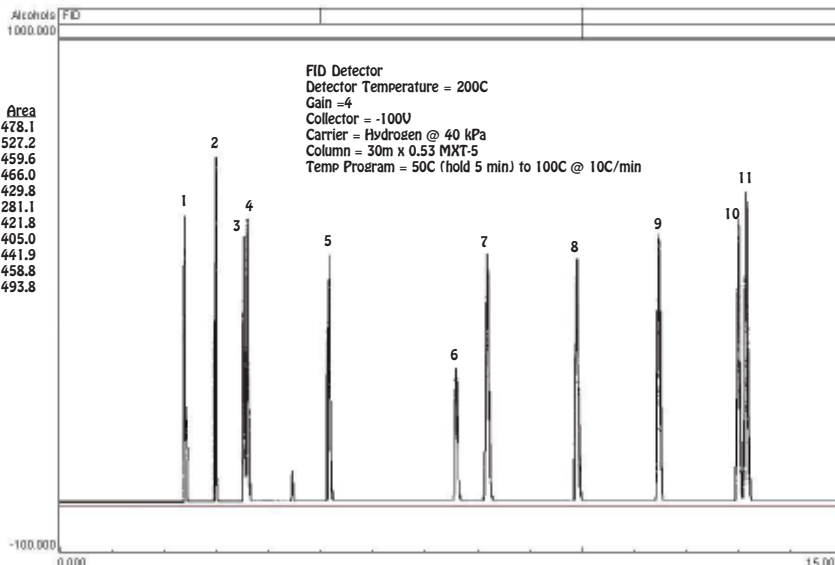
- 600-C-111 - Series 600 Alcohols GC Analyzer (FID, 30m)
- 500-C-111 - Companion 1 Portable Alcohols GC Analyzer (FID, 30m)



Companion 1 Portable GC

Alcohols

Peak	Component	Area
1	Methanol	478.1
2	Ethanol	527.2
3	Acetone	459.6
4	Isopropanol	466.0
5	1-Propanol	429.8
6	Ethyl Acetate	281.1
7	2-Methyl-1-Propanol	421.8
8	1-Butanol	405.0
9	3-Pentanol	441.9
10	3-Methyl-1-Butanol	458.8
11	2-Methyl-1-Butanol	493.8



11/2015 Specifications may change without notice.