



Petrochemical

BTU - Heating Valve



www.dps-instruments.com

Every day millions of cubic feet of natural gas flow through pipelines around the world. The heating value, measured as BTU, determines the cost and ultimate value of the natural gas. The natural gas may either be in a gas or liquid phase, where larger hydrocarbons always have a higher heating value. The rugged and reliable Series 600 laboratory and Companion portable versions of the DPS BTU GC Systems automatically sample and analyze the natural gases coming from these pipelines. The analysis of C1 - C5 hydrocarbons by our sensitive FID detector takes less than 2 minutes, and we don't program the column oven, so that samples can be run one after another quickly. The BTU value is automatically calculated and reported after each analysis. The GC Systems can also be configured with a second detector to measure whole gas components and a methanizer for Carbon Dioxide. The fully integrated BTU GC Systems are small and lightweight and all DPS systems are modular for expandability, upgrades, and easy service.

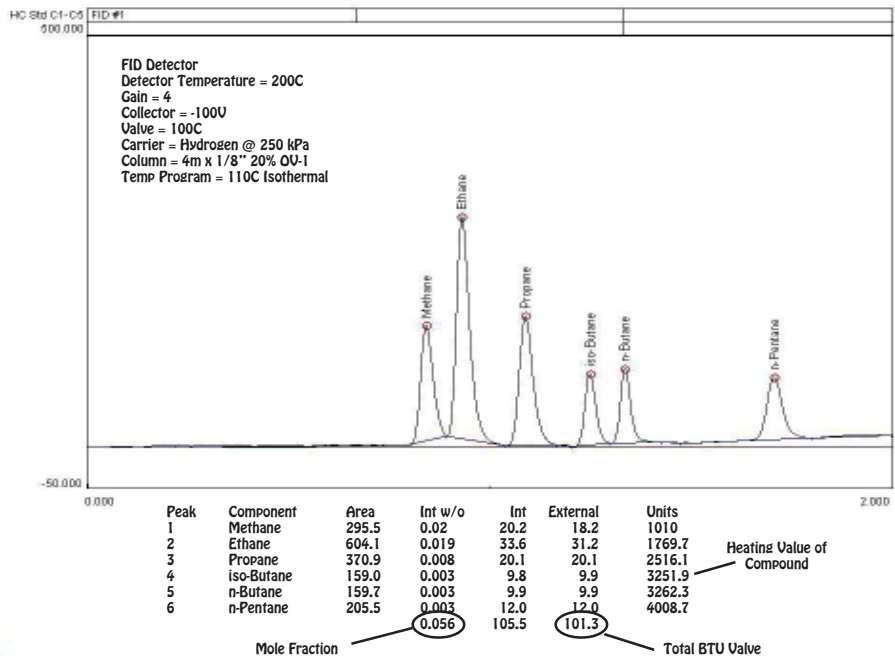


Series 600 GC

Available Configurations Include:

- 600-C-096 - BTU GC Analyzer (FID, Valve, 2m)
- 500-C-096 - Companion 1 Portable BTU GC Analyzer (FID, Valve, 2m)

Low Level Natural Gas Standard



Companion 1 Portable GC

11/2015
Specifications may change without notice.