



Forensics

Blood Alcohol



www.dps-instruments.com

The analysis of ethanol in blood, breath, and urine are the highest volume tests performed in forensic labs today. In the past these biological samples have been injected directly on the analytical columns causing injection port build up and column plugging. To vastly reduce the sample preparation time and GC System maintenance headaches, headspace methods have been adopted and verified. The DPS Blood Alcohol GC Systems are configured with a built-in Headspace Concentrator, the latest designed high resolution capillary column, and the sensitive FID detector to quickly detect ethanol and the other major constituents in less than 3 minutes. The Series 600 GC is for analyses in the lab, or use the Portable Companion 1 GC Systems for analyses right where the samples are taken. The fully integrated Blood Alcohol GC Analyzer Systems are small and lightweight and all DPS systems are modular for expandability, upgrades, and easy service.



Available Configurations Include:

- 600-C-062 - Series 600 Blood Alcohol GC Analyzer (FID, Headspace, 30m)
- 500-C-062 - Companion 1 Portable Blood Alcohol GC Analyzer (FID, Headspace, 30m)

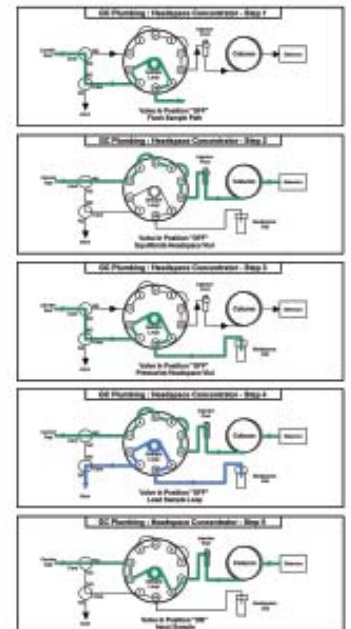
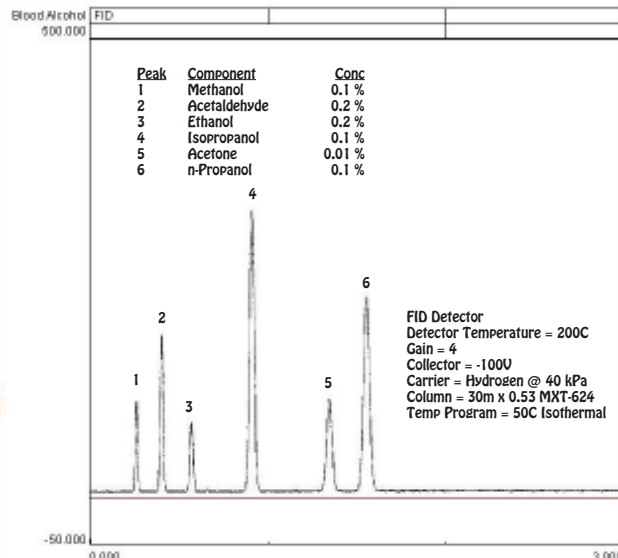


Series 600 GC

Blood Alcohol - Headspace



Companion 1 Portable GC (with Headspace Concentrator)



11/2015 Specifications may change without notice.