

# Environmental

## Gasoline Range Organics & BTEX



www.dps-instruments.com

When you need speedy BTEX (Benzene, Toluene, Ethylbenzene, and Xylenes) analyses to satisfy your clients choose one of our full range of BTEX Analyzers. We offer both Series 600 Lab GC's and Companion Portable GC's configured for Direct Injection of your extracts. For the analysis of BTEX in water samples choose the Purge & Trap BTEX Analyzers with compound sensitivities in the low part per billion (ppb) range. The integrated Purge & Trap is built right into the Series 600, or Companion chassis, so there is no need for a bulky heated transfer line. In some areas of the world the preferred method involves concentrating a soil gas sample on an absorbent trap. We have designed the Soil Gas BTEX Analyzers for this application. For your convenience, we build the Air Concentrator right in, which includes an electronically controlled vacuum pump with a flow controller for precise and reproducible air sampling. In other parts of the world the soil sample is placed in a vial, heated, and then a portion of the headspace is injected into the GC. We have configured the Headspace BTEX Analyzers for this method. All of the BTEX Analyzers are fully integrated GC Systems that are small and lightweight and all DPS systems are modular for expandability, upgrades, and easy service.



Series 600 GC

### Available Configurations Include:

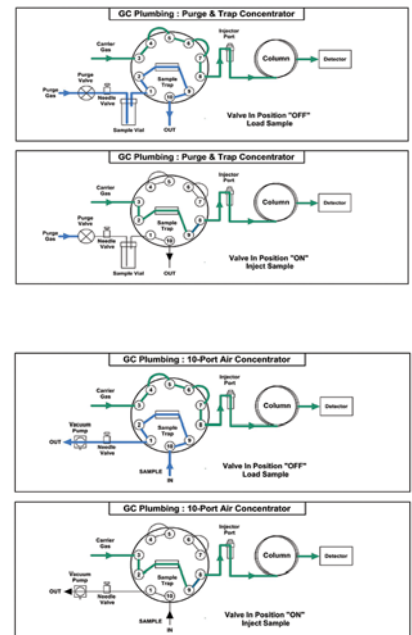
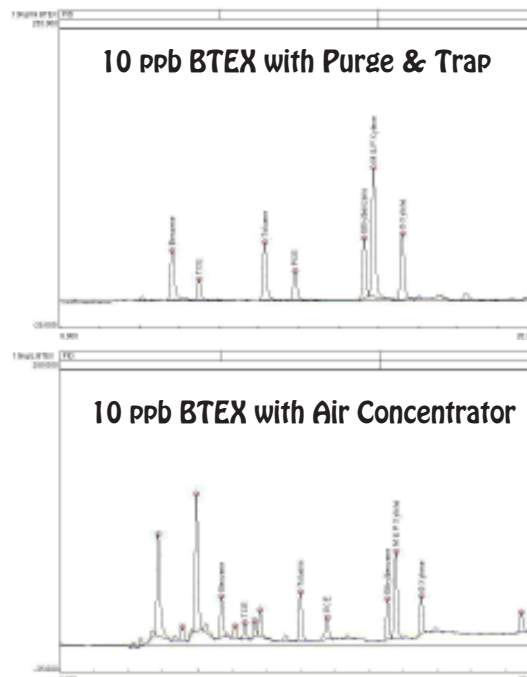
- 600-C-010 - Series 600 BTEX GC Analyzer (FID, PID, 30m)
- 500-C2-011 - Companion 2 Portable BTEX GC Analyzer (FID, PID, 30m)

### Options:

- Purge & Trap Concentrator
- Air Sample Concentrator
- Headspace Concentrator



Companion 2 Portable GC  
(with Purge & Trap Concentrator)



11/2015 Specifications may change without notice.