



# Forensics

## Inhalants



www.dps-instruments.com

There are more than 1000 ordinary household products that may be abused via inhalation, such as hair spray, glue/adhesives, gasoline, paint, solvents, marker pens, correction fluid, butane lighter fluid, propane gas, cooking sprays, and household cleaners. These products are easy to obtain, inexpensive, and contain volatile substances that the user perceives as being free of toxic components. The availability and low cost of these products make them more accessible to children than tobacco, alcohol, or drugs. Consequently, inhalant abuse is on the rise, especially among young people. The DPS Inhalants GC Systems are configured with the latest designed high resolution column and the sensitive FID detector to quickly detect these compounds. The Series 600 GC is for analyses in the lab, or use the Portable Companion 1 GC System for analyses right where the samples are taken. The fast heating and rapid cooling column oven in every DPS GC vastly increases your sample throughput. The fully integrated Inhalants GC Analyzer Systems are small and lightweight and all DPS systems are modular for expandability, upgrades, and easy service.



### Available Configurations Include:

- 600-C-064 - Series 600 Inhalants GC Analyzer (FID, 30m)
- 500-C-064 - Companion 1 Portable Inhalants GC Analyzer (FID, 30m)



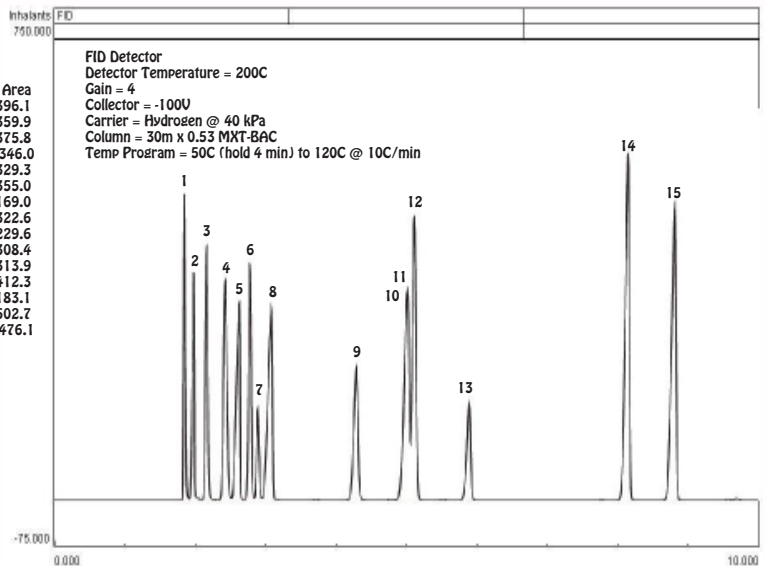
Series 600 GC

### Inhalants of Abuse



Companion 1 Portable GC

Peak	Component	Area
1	Diethyl Ether	396.1
2	Methanol	359.9
3	Hexane	375.8
4	Methyl-tert-Butyl Ether	346.0
5	Ethanol	329.3
6	Acetone	355.0
7	Methylene Chloride	169.0
8	Isopropanol	322.6
9	Ethyl Acetate	229.6
10	Chloroform	308.4
11	Methyl Ethyl Ketone	313.9
12	Benzene	412.3
13	Trichloroethylene	183.1
14	Toluene	502.7
15	Methyl Isobutyl Ketone	476.1



11/2015 Specifications may change without notice.