



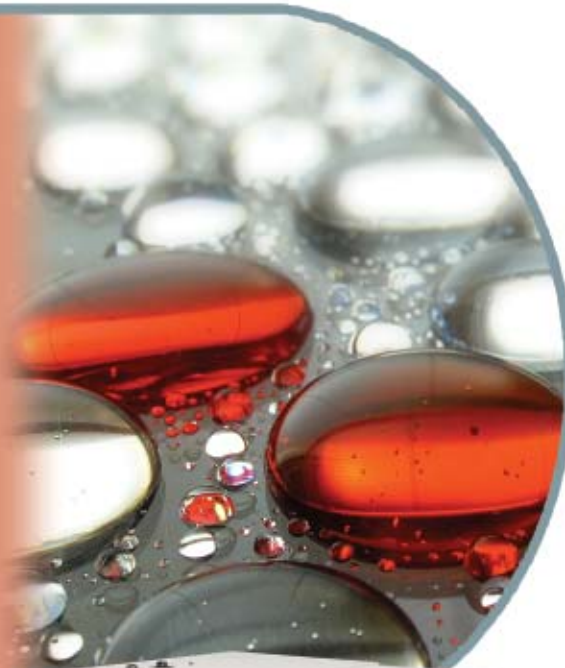
Solvents & Chemicals

Silanes



www.dps-instruments.com

Silanes are structural analogs of saturated hydrocarbons, but are much less stable. All burn or explode when exposed to air and react readily with olefins to form alkylsilanes, which are products used as water repellents, masonry protection, starting materials for silicones, and in the manufacture of semiconductors. Silanes are also used as coupling agents to adhere glass fibers to a polymer matrix, or a synthetic layer on a titanium implant. With so many uses for silanes, and keeping safety in mind, the DPS Silanes GC Systems are configured with the latest designed high resolution capillary column and the sensitive FID detector to quickly detect these compounds. The Series 600 GC is for analyses in the lab, or use the Portable Companion 1 GC System for analyses right where the samples are taken. The fast heating and rapid cooling column oven in every DPS GC vastly increases your sample throughput. The fully integrated Silanes GC Analyzer Systems are small and lightweight and all DPS systems are modular for expandability, upgrades, and easy service.



Series 600 GC

Available Configurations Include:

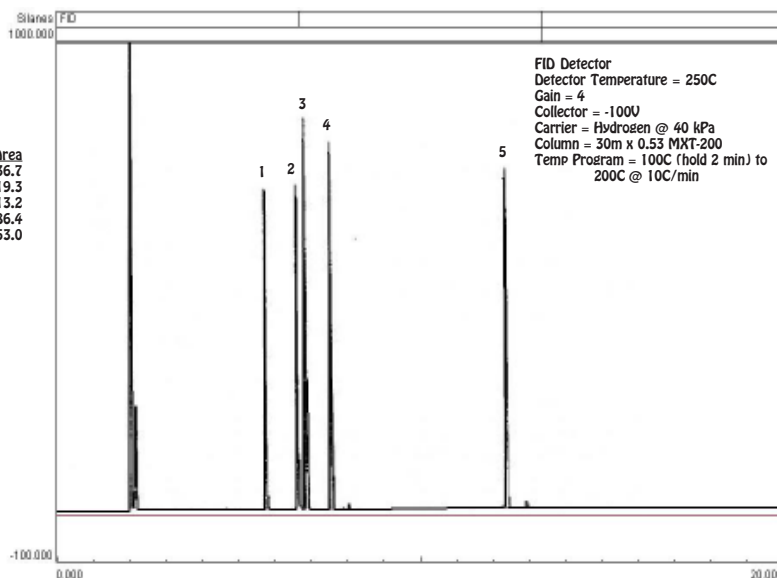
- 600-C-119 - Series 600 Silanes GC Analyzer (FID, 30m)
- 500-C-119 - Companion 1 Portable Silanes GC Analyzer (FID, 30m)



Companion 1 Portable GC

Silanes

Peak	Component	Area
1	Phenyl dichlorosilane	936.7
2	Phenyltrichlorosilane	919.3
3	Methylphenyl Dichlorosilane	1013.2
4	Phenylvinyl Dichlorosilane	986.4
5	Diphenyl Dichlorosilane	953.0



11/2015 Specifications may change without notice.