



# Solvents & Chemicals

## Siloxanes



www.dps-instruments.com

The word Siloxane is derived from the words Silicon, Oxygen, and Alkane. Siloxanes can be found in products such as cosmetics, deodorants, water repelling windshield coatings, and some soaps. They occur in landfill gas and are being evaluated as alternatives to perchloroethylene for dry cleaning, which is widely considered environmentally undesirable. The polymerized form of siloxanes (polysiloxanes) are similar to silicones and also used as adhesives and moisture barriers. To make sure that all of these compounds can be separated and identified, the DPS Siloxanes GC Systems are configured with the latest designed high resolution capillary column and the sensitive FID detector to quickly detect these compounds. The Series 600 GC is for analyses in the lab, or use the Portable Companion 1 GC System for analyses right where the samples are taken. The fast heating and rapid cooling column oven in every DPS GC vastly increases your sample throughput. The fully integrated Siloxanes GC Analyzer Systems are small and lightweight and all DPS systems are modular for expandability, upgrades, and easy service.

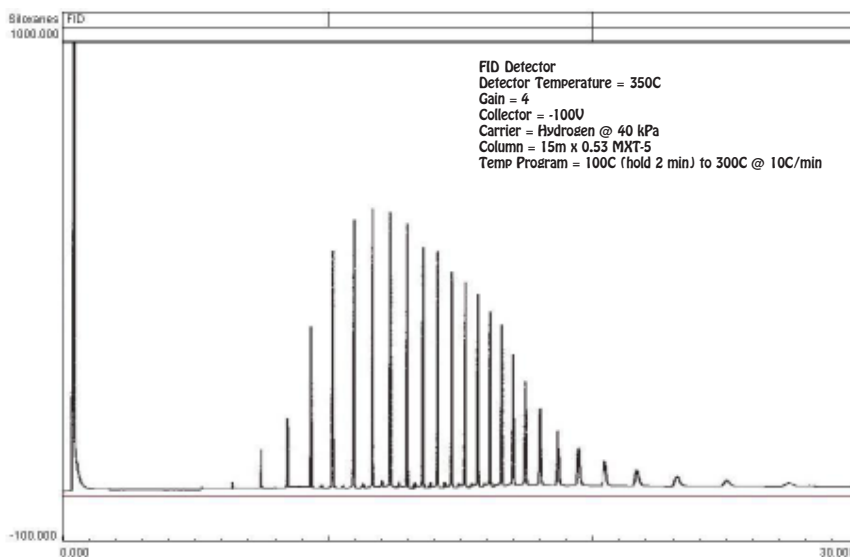


Series 600 GC

### Available Configurations Include:

- 600-C-120 - Series 600 Siloxanes GC Analyzer (FID, 15m)
- 500-C-120 - Companion 1 Portable Siloxanes GC Analyzer (FID, 15m)

### Polysiloxane



Companion 1 Portable GC

11/2015 Specifications may change without notice.