



Foods, Flavors, & Fragrances

Sugar Alcohols



www.dps-instruments.com

Sugar alcohols are neither sugars nor alcohols. They are carbohydrates with a chemical structure that partially resembles sugar and partially resembles alcohol, but they don't contain ethanol as alcoholic beverages do. They are incompletely absorbed and metabolized by the body, and consequently contribute fewer calories, which is why they have recently have been used in new products. Technical advances have added to the range of sugar alcohols available for food use and they are found in sugar-free and reduced-sugar products, and in foods intended for individuals with diabetes. Since the general population over the last few decades has developed a sweet tooth, the replacement of sucrose with sugar alcohols has become big business. The DPS Sugar Alcohols GC Analyzers are configured to meet the demand of ever increasing sugar alcohol analysis requirements. The sensitive FID detector and selective capillary column combination easily separate and identify these compounds. The Series 600 GC is for analyses in the lab, or use the Portable Companion 1 GC Systems for analyses right where the samples are taken. The fully integrated Sugar Alcohols GC Analyzer Systems are small and lightweight and all DPS systems are modular for expandability, upgrades, and easy service.



Series 600 GC

Available Configurations Include:

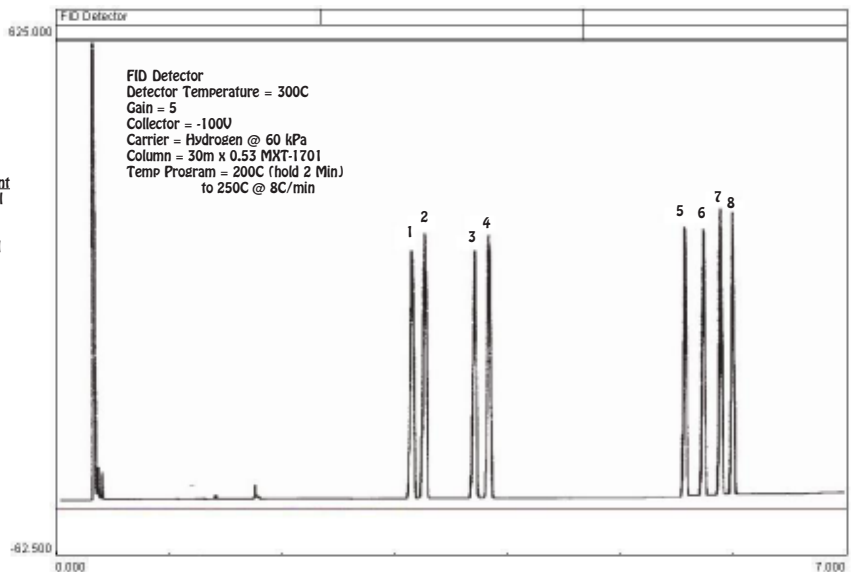
- 600-C-048 - Series 600 Sugar Alcohols GC Analyzer (FID, 30m)
- 500-C-048 - Companion 1 Portable Sugar Alcohols GC Analyzer (FID, 30m)

Sugar Alcohols



Companion 1 Portable GC

Peak	Component
1	Rhamnitol
2	Fucitol
3	Ribitol
4	Arabinitol
5	Mannitol
6	Galactitol
7	Glucitol
8	Inositol



11/2015 Specifications may change without notice.